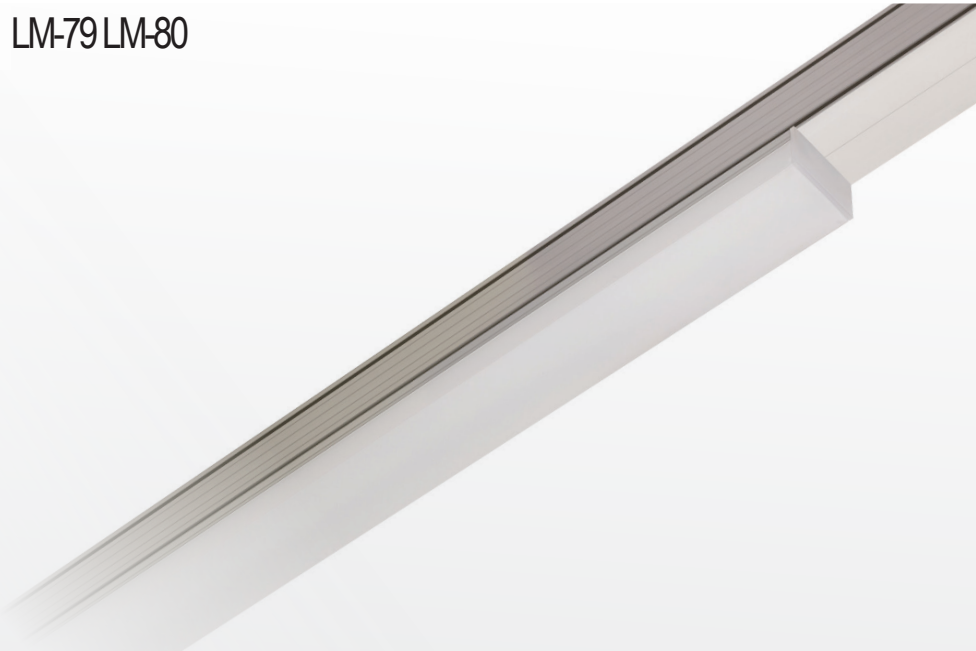


# DUNCAN LINEAR LED

IP20 - IP54

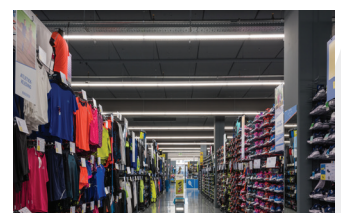
CE  LM-79 LM-80



The multifunctional Duncan has been developed especially for retail, industry, offices and utilities. The patented lighting system is a perfect fit everywhere: its lumen output and light diffusion can be fine-tuned to the installation height, décor and location application. The microprismatic design of the lens optics is wholly unique and does not require a reflector to reduce lens glare. This results in an open, transparent design with optimum light yield combined with maximum comfort. The Duncan has been developed to meet EN standards.

The Duncan system can be used as a continuous light line and can be complemented with a wide range of light spots that can be easily clicked onto the profile. The transparent lenses and matching transparent hoods give it a high-quality look and feel. All elements can be easily linked to create nice continuous lines without any visible connections. Veko also pre-installs the fixtures onto aluminium support profiles, which significantly reduces assembly time.

The energy-efficient Duncan light line has the highest lumen-to-watt ratio on the market. In order to save even more on energy costs, it is also possible to connect the Duncan to a Light Management System, which controls the light line even more efficiently. Veko's light lines are among the most sustainable products in the world. The lighting is delivered almost without any packaging, is 100% recyclable and can be easily refurbished up to 45 years after installation.



CLEVER  
SWIFT  
SOLID

### Technical information

<b>Length</b>	500 mm	1,000 mm	1,500 mm	2,000 mm
<b>Output flux</b>	1,850 - 17,000 lm			
<b>Wattage</b>	11 - 122 W			
<b>Voltage</b>	220 - 240 V			
<b>Frequency</b>	50 ÷ 60 Hz			
<b>Power factor</b>	>0.9			
<b>Drivers</b>	Signify or Osram			
<b>Operational temperature*</b>	-20 °C to +35 °C			
<b>Weight</b>	Approx. 2.5 kg/m including profile and accessories			
<b>Application</b>	Industrial areas, retail, offices and coldstores			
<b>Installation height</b>	2 - 20 m			
<b>Colour temperature</b>	Natural white ( $\pm$ 4,000 K) On request other colour temperatures possible (3,000 - 6,500 K)			
<b>Colour Rendering Index (CRI)</b>	>80 (>90 possible)			
<b>Lens options</b>	Narrow, Wide, Lambertian, Diffuse			
<b>Cover material</b>	PMMA			
<b>Material</b>	Untreated aluminium			
<b>Colour Consistency (SDCM)</b>	3			
<b>Colour</b>	Untreated aluminium, anodized and RAL colours			
<b>Impact resistance</b>	IK03 (IP20 and IP40: Diffuse) IK07 (IP20-IP40, IP54 and IP65: Narrow, Wide and Lambertian)			
<b>IP code</b>	IP20 - IP40 (Narrow, Wide, Lambertian and Diffuse) IP54 (Narrow, Wide, Lambertian)			
<b>Options</b>	DALI, CLO, corridor, centralized and decentralized emergency lighting			
<b>Warranty</b>	L85B10 / at least 5 year warranty / Ta 35 °C			

\* Fixtures equipped with decentralized emergency lighting batteries have an operational temperature of +5 °C to +25 °C..

On the initial performance, a tolerance of  $\pm$  10% is applicable, according to IEC. Technical data subject to change.

CLEVER  
SWIFT  
SOLID

Duncan - ENv1.2 01/09/21

# DUNCAN LINEAR LED

IP20 - IP54

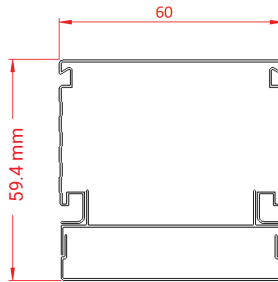
## DUNCAN NARROW



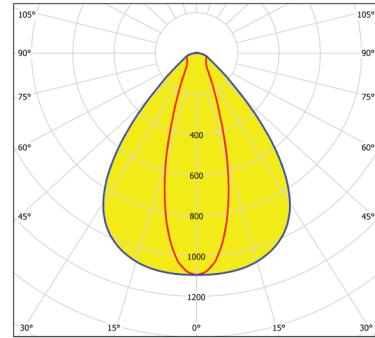
### Luminaire



### Dimensions



### Polar diagram



Product code IP20 - IP54	Length (mm)	Wattage (W)	Output flux (lm)	Lumen/Watt
LNDx-N325	500	11 - 62	1,850 - 7,800	127 - 162
LNDx-N312	1,000	11 - 62	1,850 - 7,800	127 - 162
LNDx-N315	1,000	11 - 106	1,900 - 13,900	132 - 164
LNDx-N352	1,500	11 - 92	1,850 - 11,900	129 - 163
LNDx-N355	1,500	17 - 122	2,700 - 17,000	140 - 163
LNDx-N362	2,000	11 - 106	1,900 - 13,900	132 - 164

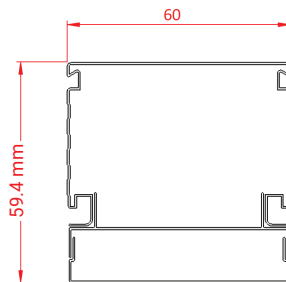
## DUNCAN WIDE



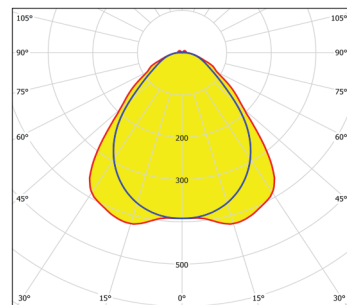
### Luminaire



### Dimensions



### Polar diagram



Product code IP20 - IP54	Length (mm)	Wattage (W)	Output flux (lm)	Lumen/Watt
LNDx-W325	500	11 - 62	1,850 - 7,700	124 - 158
LNDx-W312	1,000	11 - 62	1,850 - 7,700	124 - 158
LNDx-W315	1,000	11 - 106	1,850 - 13,500	129 - 161
LNDx-W352	1,500	11 - 92	1,850 - 11,500	126 - 160
LNDx-W355	1,500	17 - 122	2,650 - 16,700	137 - 159
LNDx-W362	2,000	11 - 106	1,850 - 13,500	129 - 161

On the initial performance, a tolerance of  $\pm 10\%$  is applicable, according to IEC. Technical data subject to change.

CLEVER  
SWIFT  
SOLID

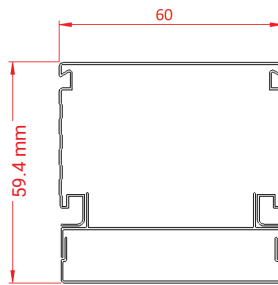
### DUNCAN LAMBERTIAN



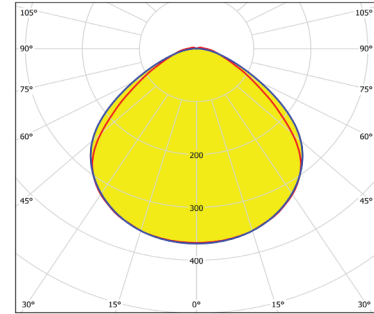
#### Luminaire



#### Dimensions



#### Polar diagram



Product code IP20 - IP54	Length (mm)	Wattage (W)	Output flux (lm)	Lumen/Watt
LNDx-L325	500	11 - 62	1,850 - 7,800	127 - 162
LNDx-L312	1,000	11 - 62	1,850 - 7,800	127 - 162
LNDx-L315	1,000	11 - 106	1,900 - 13,900	132 - 164
LNDx-L352	1,500	11 - 92	1,850 - 11,900	129 - 163
LNDx-L355	1,500	17 - 122	2,700 - 17,000	140 - 163
LNDx-L362	2,000	11 - 106	1,900 - 13,900	132 - 164

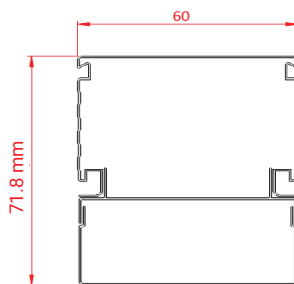
### DUNCAN DIFFUSE



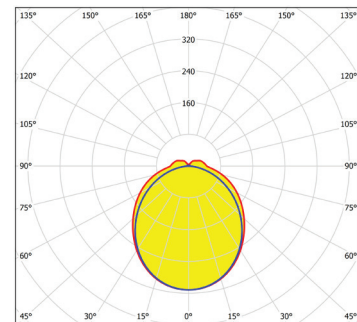
#### Luminaire



#### Dimensions



#### Polar diagram



Product code IP20 - IP40	Length (mm)	Wattage (W)	Output flux (lm)	Lumen/Watt
LNDx-HD325	500	11 - 62	1,900 - 7,900	129 - 164
LNDx-HD312	1,000	11 - 62	1,900 - 7,900	129 - 164
LNDx-HD315	1,000	11 - 106	1,950 - 14,000	133 - 166
LNDx-HD352	1,500	11 - 92	1,900 - 12,000	131 - 165
LNDx-HD355	1,500	17 - 122	2,750 - 17,000	141 - 164
LNDx-HD362	2,000	11 - 106	1,950 - 14,000	133 - 166

On the initial performance, a tolerance of  $\pm 10\%$  is applicable, according to IEC. Technical data subject to change.

**CLEVER  
SWIFT  
SOLID**