

## ROWAN LOW GLARE LED

IP40

CE  LM-79 LM-80

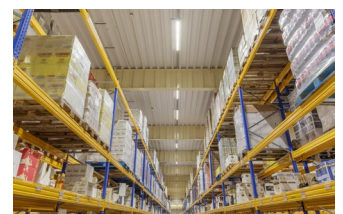


The Veko Rowan luminaires offers advanced low glare LED luminaires, and is a great choice in spaces where the blinding factor is highly important. With different lens optics in our range, there is a Rowan luminaire for each space: from wide rack aisles, loading areas and production areas to high bay warehouses. In addition to a great, robust appearance, the Rowan LED luminaires are extra-ordinarily efficient. Because the luminaires can be equipped with lens optics, the best possible distribution of light and the best conceivable protection against glare is offered. Rowan ensures job satisfaction and productivity.

The Rowan is made of brute aluminium. Veko supplies the luminaires pre-assembled on aluminium profiles. The use of aluminium in our light lines also ensures a great temperature management: Veko LED lighting operates effortlessly at ambient temperatures from -20 °C - +35 °C or even higher. At Veko, an warranty of 10 years is therefore possible.

To save even more on your energy costs, choose a light management system. Thanks to intelligent control, your main and emergency lighting requires less maintenance and the dimming function of the luminaires operates more efficiently.

Veko's lighting lines are not only some of the most energy-efficient in the world, but also the most sustainable. The equipment is supplied with virtually no packaging, is 100 per cent recyclable and is easily refurbished, even after 45 years.



CLEVER  
SWIFT  
SOLID

# ROWAN LOW GLARE LED

# IP40

## Technical information

Length	1,037 mm	1,530 mm	2,023 mm
Output flux	1,700 - 24,100 lm		
Wattage	10.3 - 154.5 W		
Voltage	220 - 240 V		
Frequency	50 ÷ 60 Hz		
Power factor	>0.9		
Drivers	Signify or Osram		
Operational temperature*	-20 °C to +35 °C (on request higher or lower temperatures possible)		
Weight	Approx. 8.6 pounds per m, including profile and accessories		
Application	Warehouses with rack aisles		
Installation height	2 - 20 m		
Colour temperature	Natural white (± 4,000 K) On request other colour temperatures possible (3,000 - 6,500 K)		
Colour Rendering Index (CRI)	>80 (>90 possible)		
Lens options	Narrow, Semi Wide and Wide		
Cover material	PMMA		
Material	Untreated aluminium		
Colour	Untreated aluminium, anodized and RAL colours		
Impact resistance	IK02		
IP code	IP40		
Options	DALI, CLO, corridor, central and decentral emergency lighting		
Warranty	L85B10 / at least 5 year warranty / Ta 35 °C		
Expected life span	It is possible to reach 100,000 hours		
BREEAM norms	Yes		

\* Fixtures equipped with decentralized emergency lighting batteries have an operational temperature of +5 °C to +25 °C.

On the initial performance, a tolerance of ± 10% is applicable, according to IEC. Technical data subject to change.

CLEVER  
SWIFT  
SOLID

# ROWAN LOW GLARE LED

IP40

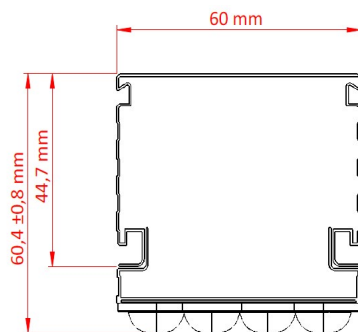
## ROWAN NARROW



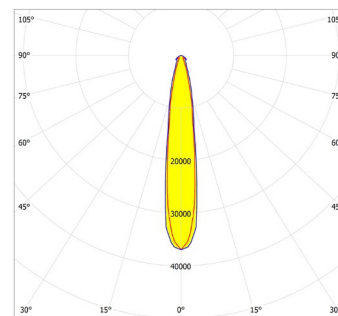
### Luminaire



### Dimensions



### Polar diagram



Product code IP40	Length (mm)	Wattage (W)	Output flux (lm)	Lumen/Watt
LGN-N-105	1,037	10.3 - 80.8	1,700 - 12,250	152 - 175
LGN-N-155	1,530	21.4 - 118.5	3,800 - 18,300	158 - 180
LGN-N-205	2,023	19.2 - 154.5	3,400 - 24,100	156 - 184

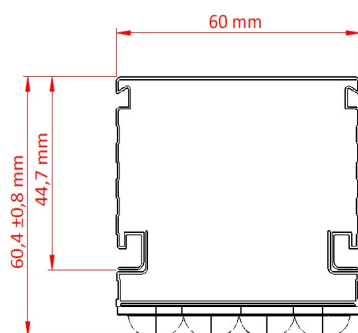
## ROWAN SEMI WIDE



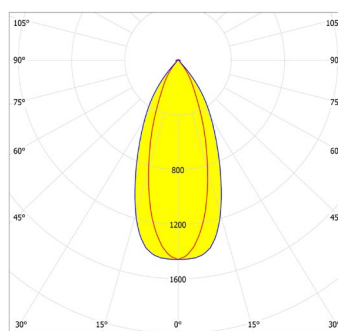
### Luminaire



### Dimensions



### Polar diagram



Product code IP40	Length (mm)	Wattage (W)	Output flux (lm)	Lumen/Watt
LGN-S-105	1,037	10.3 - 80.8	1,700 - 12,250	152 - 175
LGN-S-155	1,530	21.4 - 118.5	3,800 - 18,300	158 - 180
LGN-S-205	2,023	19.2 - 154.5	3,400 - 24,100	156 - 184

On the initial performance, a tolerance of  $\pm 10\%$  is applicable, according to IEC. Technical data subject to change.

CLEVER  
SWIFT  
SOLID

# ROWAN LOW GLARE LED

**IP40**

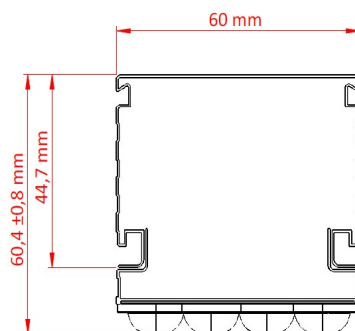
## ROWAN WIDE



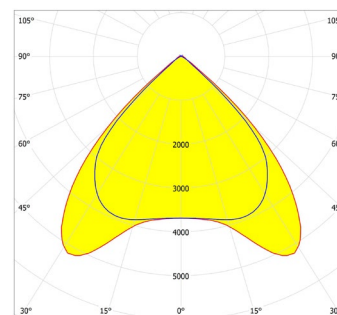
### Luminaire



### Dimensions



### Polar diagram



Product code IP40	Length (mm)	Wattage (W)	Output flux (lm)	Lumen/Watt
LGN-W-105	1,037	10.3 - 80.8	1,700 - 12,250	152 - 175
LGN-W-155	1,530	21.4 - 118.5	3,800 - 18,300	158 - 180
LGN-W-205	2,023	19.2 - 154.5	3,400 - 24,100	156 - 184

On the initial performance, a tolerance of  $\pm 10\%$  is applicable, according to IEC. Technical data subject to change.

CLEVER  
SWIFT  
SOLID