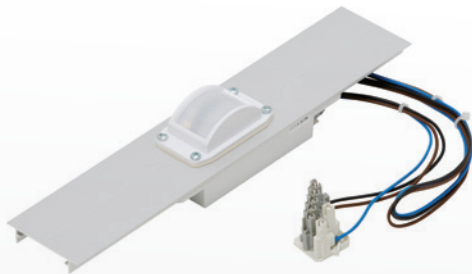


# MD-L-N PRESENCE DETECTOR

IP20 - IP54




The MD-L-N presence detector performs outstandingly in combination with Veko industrial lighting in narrow aisles with tall racks. Because of the detection angle and a combination of useful features, you can achieve maximum energy savings with this motion sensor. Not a single motion goes unnoticed by the extremely sensitive infrared (PIR) sensor of the MD-L-N, which registers and interprets changes in the thermal image extremely quickly.

The MD-L-N has various settings for detection sensitivity, turn-off delay and twilight sensor. A convenient remote control allows you to set the detector at the levels that suit you. Your lighting will not be on for example if there is enough daylight and will switch off, with a delay, when there is no more motion. You will always have the exact required amount of illumination everywhere.

## Technical information

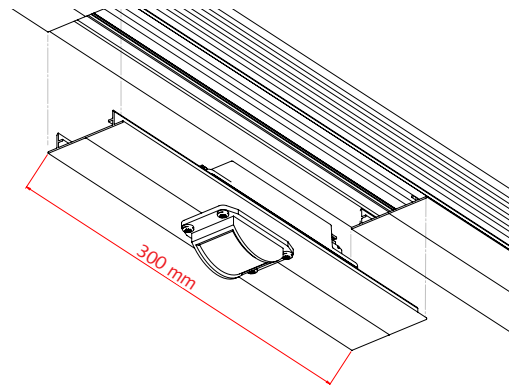
Length (mm)	300 mm
Wattage (W)	0.5 W < 4 W (off < on)
Voltage (V)	230 V
Frequency (Hz)	50 Hz
Circuit	6A: Cos $\phi$ 1 3A: Cos $\phi$ 0.4
Sensitivity settings	3 (standard maximum sensitivity)
Twilight sensor	Adjustable in 9 steps between 100 – 1,500 Lux (standard 1,000 Lux)
Turn-off delay relay	Relay 10 seconds – 45 minutes
Detection angle	Approximately 130° - 140°
Working environment	-35 °C - +45 °C
Corridor function/dynamic switching, e.g. 10-100%	In combination with DALI driver and ballasts
KEMA and ENEC certification	Has been requested by DEKRA
Warranty	5 years

## Accessories

Remote control	Order code
	TR67

Technical data subject to change.

## Measurements



## Detection range

