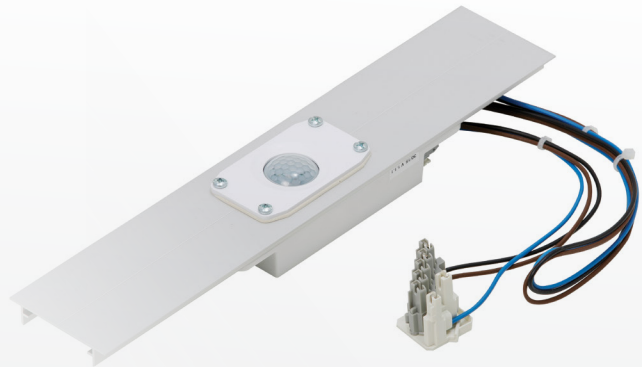


VEKO PRESENCE DETECTION



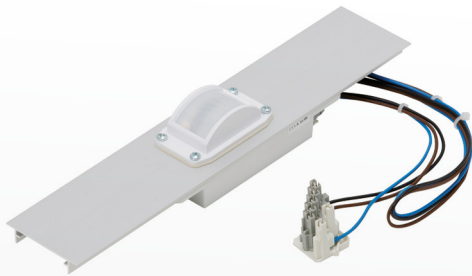
Obviously, you want the most energy-efficient lighting that is available for your office or industrial area. Having a good presence detection is like dotting your i's and crossing your t's. If you choose Veko's presence detection, you can be sure that your lighting comes on the moment someone enters a room, but will never stay on unnecessarily long. That is pleasant, safe and hugely efficient.

Quality presence detection in your office, production area, cold storage or warehouse calls for a carefully planned custom-made solution. That is why Veko offers a wide range of sensors and accessories. We create the optimum presence detection for you in no time at all. Our presence detectors can be integrated into new and existing lighting installations. Even with your existing lighting, you will therefore save more energy in a relatively easy way.

CLEVER
SWIFT
SOLID

MD-L-N ADVANCED RELAY

IP20 - IP54 - IP65



The waterproof MD-L-N Advanced Relay presence detector performs outstandingly in combination with Veko industrial lighting in narrow aisles with tall racks. Because of the detection angle and a combination of useful features, you can achieve maximum energy savings with this motion sensor. Not a single motion goes unnoticed by the extremely sensitive infrared (PIR) sensor of the MD-L-N Advanced Relay, which registers and interprets changes in the thermal image extremely quickly.


The MD-L-N Advanced Relay detector has various settings for detection sensitivity, turn-off delay and twilight sensor. A convenient remote control allows you to set the detector at the levels that suit you. Your lighting will not be on for example if there is enough daylight and will switch off, with a delay, when there is no more motion. You will always have the exact required amount of illumination everywhere.



Technical information

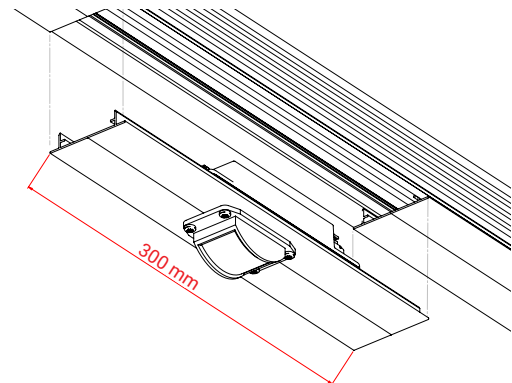
Length (mm)	300 mm
Wattage (W)	0.5 W < 4 W (off < on)
Voltage (V)	220 - 240 V
Frequency (Hz)	50 ÷ 60 Hz
Circuit	6A
Sensitivity settings	5 (standard maximum sensitivity)
Twilight sensor	Adjustable in 9 steps 0 – 1,000 Lux
Turn-off delay relay	Relay 1 - 99 minutes
Ambient temperature	-25 °C - +35 °C
Corridor function/dynamic switching, e.g. 10-100%	In combination with DALI driver and ballasts
Programming	Readable and reprogrammable by colour coding with LED in the sensor
ENEC certification	Has been requested by DEKRA
Warranty	5 years

Accessories

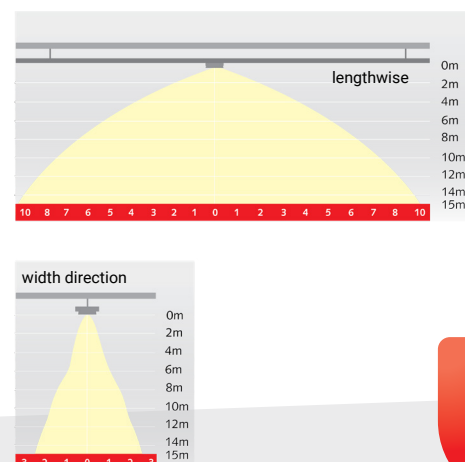
Remote control	Order code
	TR67

Technical data subject to change.

Measurements



Detection range



CLEVER
SWIFT
SOLID